

Multi-Purpose Hydronic Accessory Tanks

WMT Series

Wessels WMT series ASME
Chilled and Hot Water Multi-
Purpose Carbon Steel Hydronic
Accessory Tanks with WesPro
Super Baffle Filtration

Optional:
WesMag at Inlets
Stainless Steel Construction
Trim Package

APPLICATIONS

Buffer System Volume

Chilled or Hot Water

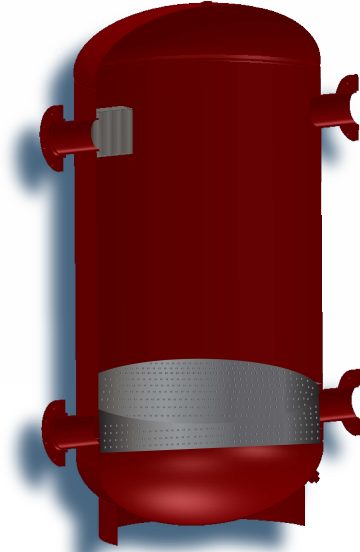
Primary/Secondary

Air & Dirt Separation

Magnetic Filtration

Reduce Short-Cycling

Extend System Life



Wessels ASME Multi-Purpose Tanks (WMT) are designed for multiple functions. The four multi-configurable connections allow for primary/secondary hydraulic separation with buffer energy storage for either hot or chilled water systems. The buffer volume slows fluid velocity resulting in superior air elimination. Adding WesPro Super Filter Baffle coalescing media increases air & dirt elimination efficiencies. For ferrous impurities, the WesMag system can be installed for additional particulate removal.

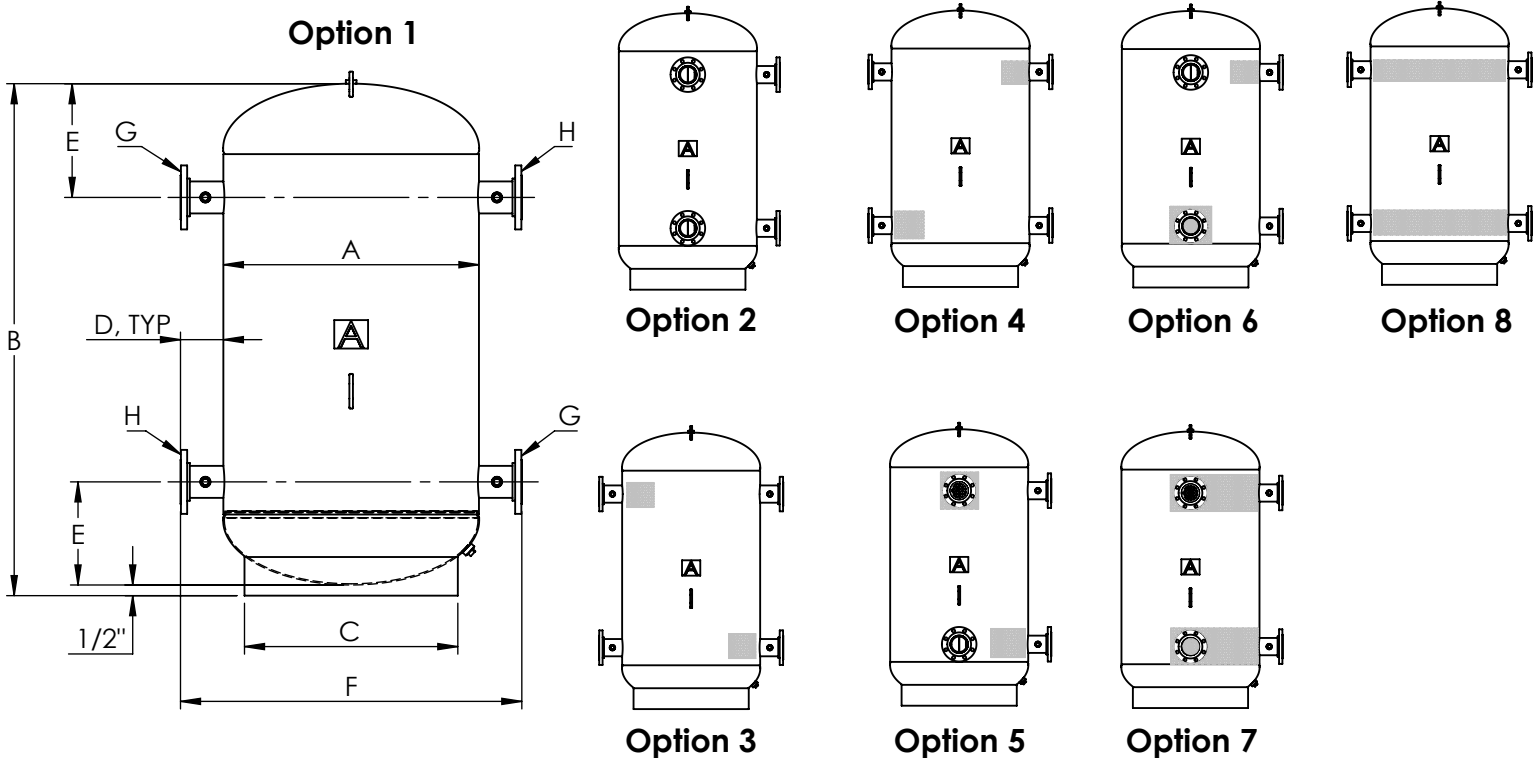
CUSTOMIZE YOUR CONFIGURATION

- 90° and 180° inlet/outlet corner or in-line models
- Connection-to-connection or partial internal coalescing media arrangement included
- WesMag® rare earth magnetic filtration (optional)
- Air vent and blow-down valve trim package (optional)



SINCE 1908
wessels
company

WMT - Multi-Purpose Hydronic Accessory Tanks



Dimensions & Weights:

Model Number	Dimensions in Inches							Approx. Shipping Weight (lbs)
	A	B	C	D	E	(F)	(G)	
WMT-50	16	60	12	See Note 4	9 5/16	2, 3, 4	2, 3, 4	56
WMT-60	20	48	16		10 3/8	2, 3, 4	2, 3, 4	62
WMT-75	20	60	16		10 3/8	2, 3, 4	2, 3, 4	74
WMT-100	24	60	20		12 1/2	2, 3, 4	2, 3, 4	80
WMT-150	26	60	24		14 1/2	2, 3, 4	2, 3, 4	125
WMT-250	30	84	27		15	3, 4, 6	3, 4, 6	175
WMT-350	36	92	30		16 1/2	3, 4, 6	3, 4, 6	210
WMT-400	36	98	30		17 1/2	4, 6, 8	4, 6, 8	460
WMT-500	42	90	36		19 1/2	4, 6, 8	4, 6, 8	577
WMT-700	48	100	42		20 3/8	4, 6, 8	4, 6, 8	850
WMT-850	54	98	48		22 3/4	4, 6, 8	4, 6, 8	1858
WMT-1040	60	96	54		24 3/4	6, 8, 10	6, 8, 10	2490

Model Example WMT-50-22-1

(a) (F)(G) (b)

(a) Gallon Size

Connection Size:

(F) Primary Zone

(G) Secondary Zone

(b) Configuration

TYPICAL SPECIFICATION

Furnish and install, as shown on plans, a WMT-_____ as manufactured by Wessels Company. The tank shall incorporate media (inlets/inlets & outlets/none). The system primary-zone water connections must be _____" (NPT/flanged/grooved) and the system secondary-zone water connections must be _____" (NPT/flanged/grooved) and positioned (90°/180°) apart. The WMT must be constructed in accordance with the most recent addendum of Section VIII Division 1 of the ASME Boiler and Pressure Vessel Code and constructed and stamped for _____ PSI working pressure @ 450°F.

Each tank shall be Wessels model number WMT-_____ or approved equal.

- Inspection openings will be provided as required by ASME code.
- Insulation, Trim Package, and WesMag are optional.
- Dimensions shown are subject to change and should not be used for pre-piping. Weights are based on max flange connection. Contact your local Wessels representative is certified dimensional drawings are required.
- For connections 3F and below, The "D" dimension is 4". For connections 4F and above, The "D" dimension is 6".



SINCE 1908
wessels
company

101 Tank Street Greenwood, IN 46143
P: 317-888-9800 F: 317-865-7411
www.westank.com