

SINCE 1908  
**wessels**  
 company

SUBMITTAL

**NA-SERIES**  
 HYDRONIC EXPANSION TANKS

Models: 12NA33 to 42NA96  
 Submittal Sheet No. A-1003B Rev. 2 11/19/2019

Job Name _____	Submitted By _____	Date _____
Location _____	Approved By _____	Date _____
_____	Order No. _____	Date _____
Engineer _____	Notes _____	_____
Contractor _____	_____	_____
Sales Rep. _____	_____	_____

**Description:**

Wessels **NA** series are ASME plain carbon steel expansion tanks. They are designed to absorb the expansion forces and control the pressure in heating/cooling systems. This tank is the oldest style that has been used in this system. It works well when the air is controlled and kept in the tank, not in the system. The common face between this air cushion and the water in the tank allows the air to be absorbed by the water.

**Construction:**

Shell: Carbon Steel  
 Heads: Carbon Steel

**Design Parameters:**

Maximum Design Pressure:  
 Models 12NA33 thru 20NA78 150 PSIG  
 Models 24NA65 thru 42NA96 125 PSIG  
 Temperature Range: -20°F to 450°F

\*200 & 250 PSIG available

MODEL NUMBER	PART NUMBER	TANK VOLUME (GALLONS)	TAGGING INFORMATION	QUANTITY
12NA33	23012033	15		
12NA51	23012051	24		
14NA48	23014048	30		
14NA63	23014063	40		
16NA72	23016072	60		
20NA62	23020062	80		
20NA78	23020078	100		
24NA65	23024065	120		
24NA72	23024072	135		
30NA62	23030062	175		
30NA77	23030077	220		
30NA84	23030084	240		
30NA105	23030105	305		
36NA72	23036072	295		
36NA93	23036093	400		
36NA120	23036120	505		
42NA96	23042096	525		

**Typical Specification:**

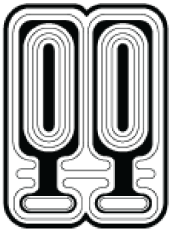
Furnish and install, as shown on plans, a \_\_\_\_\_ gallon \_\_\_\_\_" diameter X \_\_\_\_\_" long expansion tank. The tank shall have NPT system connections, sight glass openings, and drain. The tank shall be furnished with a stand ring for vertical storage. The tank must be constructed in accordance with most recent edition of Section VIII Division 1 of the ASME Boiler and Pressure Vessel Code.

Each tank shall be Wessels model number \_\_\_\_\_ NA-\_\_\_\_\_ or approved equal.



SINCE 1908  
**wessels**  
 company

101 Tank Street Greenwood, IN 46143  
 P: 317-888-9800 F: 317-865-7411  
 www.westank.com

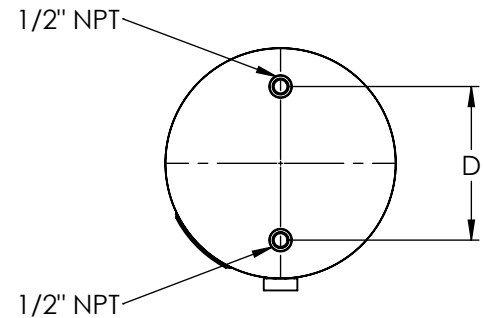
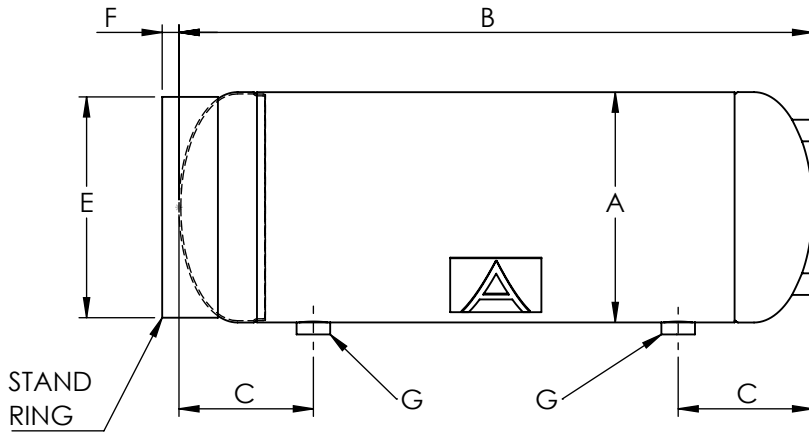


SINCE 1908  
**wessels**  
 company

SUBMITTAL

**NA-SERIES**  
 HYDRONIC EXPANSION TANKS

Models: 12NA33 to 42NA96  
 Submittal Sheet No. A-1003B Rev. 2 11/19/2019



12NA33 thru 36NA93

**Dimensions & Weights:**

Model Number	Dimensions in Inches							Approx. Shipping Weight (lbs)
	A	B	C	D	E	F	G	
12NA33	12	33	7	8	11 1/2	7/8	1	44
12NA51		51						62
14NA48	14	48	10	12		1 1/8		72
14NA63		63			92			
16NA72	16	72	10	16	18	1 1/2		120
20NA62	20	62						11 1/8
20NA78		78	168					
24NA65	24	65	11 1/8	20	18	1 1/2	218	
24NA72		72					238	
30NA62	30	62	13 1/2	22	24	2	1 1/2	338
30NA77		77						368
30NA84		84						394
30NA105		105 3/4						486
36NA72	36	72	14 3/4	28	30	2 1/2	2	502
36NA93		91 1/2						645
36NA120		120			810			
42NA96		42			96	18		-

**Notes:**

- Stand Ring not provided on 36NA120 and 42NA96
- 12" x 16" manway furnished on 42NA96
- NA-style tanks are fully compatible with ethylene & propylene glycol/water mixtures.



SINCE 1908  
**wessels**  
 company

101 Tank Street Greenwood, IN 46143  
 P: 317-888-9800 F: 317-865-7411  
 www.westank.com